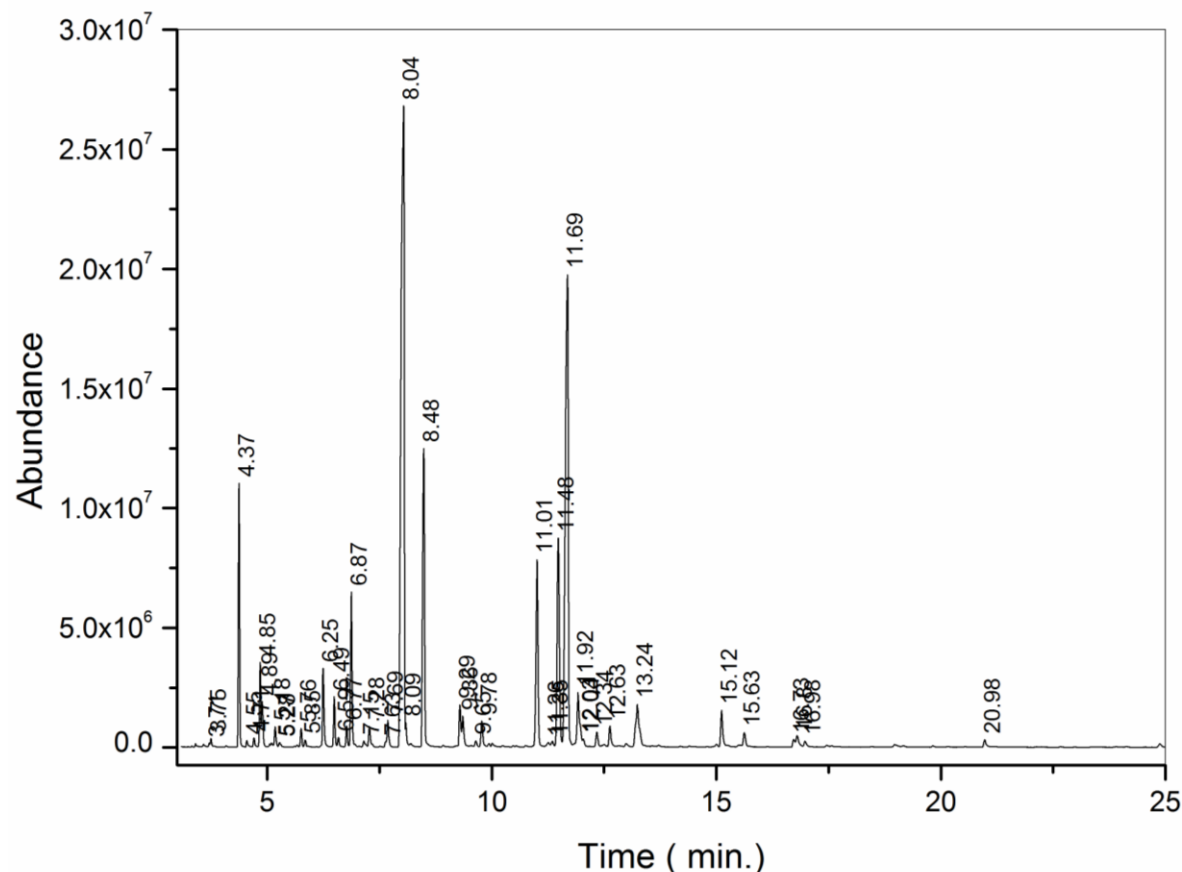




RELATÓRIO DE ANÁLISE DE ÓLEO ESSENCIAL

Solicitante: HARMONIE AROMATERAPIA EIRELI**Tipo de Amostra:** Óleo Essencial de Camomila Romana 22/003**Técnica Empregada:** GC-MS**Data de realização da análise:** 08/02/2022

| TR | Identificação | % |
|-------|--|-------|
| 4,37 | isobutyl isobutyrate | 4,52 |
| 4,85 | α-Pinene | 1,55 |
| 4,90 | Isobutyl methacrylate | 0,94 |
| 5,18 | Camphene | 0,44 |
| 5,76 | Sabinene | 0,39 |
| 5,85 | β-Pinene | 0,17 |
| 6,25 | Isopropyl 3-methyl-2-butenolate | 1,78 |
| 6,49 | isopropyl angelate | 1,02 |
| 6,59 | Isobutyl isovalerate | 0,26 |
| 6,77 | iso-Amyl iso-butyrate | 0,45 |
| 6,88 | 2-methylbutyl isobutyrate | 3,38 |
| 7,15 | p-Cymene | 0,20 |
| 7,28 | D-Limonene | 0,49 |
| 7,69 | isoamyl methacrylate | 0,75 |
| 8,04 | Isobutyl angelate | 28,56 |
| 8,49 | 2-methyl-2-propenyl angelate | 7,92 |
| 9,36 | butyl angelate | 0,85 |
| 9,65 | iso-Amyl 2-methyl butyrate | 0,18 |
| 9,78 | 2-Methylbutyl 2-methylbutanoate | 0,71 |
| 11,01 | trans-Pinocarveol | 5,47 |
| 11,35 | Camphene hydrate | 0,18 |
| 11,48 | Isoamyl angelate | 6,82 |
| 11,69 | 2-methyl-1-Butyl angelate | 19,52 |
| 11,92 | α-Pinocarvone | 2,05 |
| 12,04 | Borneol | 0,23 |
| 12,34 | Isopinocampone | 0,43 |
| 12,63 | Isobutyl 3-hydroxy-2-methylenebutanoate | 0,63 |
| 13,24 | Myrtenol | 2,08 |
| 15,12 | 2-hydroxy-2-methyl-3-butenyl angelate | 1,12 |
| 16,80 | Isopentyl 3-hydroxy-2-methylenebutanoate | 0,45 |
| 20,98 | Geranyl acetate | 0,23 |
| | Compostos minoritários (< 0,18 %) | 1,26 |
| | Compostos não identificados | 4,95 |